



Hanwha Solutions

Wire & Cable Compounds



Wire & Cable Compounds

Products founded on specialized research, engineering and marketing expertise

Since its establishment of Wire & Cable business in 1981, Hænwha Solutions has embarked on a transformative journey, driven by a vision to pioneer an eco-friendly future. At the heart of its operations lies a commitment to sustainability, powered by renewable energy sources including solar, wind, and hydrogen. This dedication has positioned Hænwha Solutions as a leader in the development of an eco-friendly value chain, emphasizing the importance of a sustainable tomorrow through every stride and innovation.

Hænwha Solutions has marked its journey with significant achievements, setting industry benchmarks and fostering innovation. In 1991, the company introduced the first domestic 132kV XLPE cable, a testament to its pioneering spirit. The year 2009 witnessed another remarkable milestone as Hænwha Solutions successfully passed the 345kV XLPE PQ Test, further cementing its reputation for excellence. By 2022, the company achieved a groundbreaking feat with the first domestic production of HV-grade semiconductive material, EBA(Ethylene Butyl Acrylate), underscoring its commitment to innovation and technological advancement.



Power Cable Compounds

Class	Property	Melt Index	Density	Tensile Strength at Break	Elongation at Break	Application
	Grade	g/10min	g/cm ³	kg/cm ²	%	
LV Power Cable Insulation	CLNA-8262	2.60	0.922	180	800	LLDPE, Base Resin for Silane Crosslinking
MV/HV/EHV/DC Power Cable Insulation	CLNB-8141S	-	0.921	200	550	XLPE for MV Cable Insulation (Up to 69kV(Um 72.5kV))
	CLNA-TR8142EC	-	0.922	200	550	Tree Retardant XLPE for URD or Submarine Cable(Up to 69kV(Um72.5kV))
	CLNA-8141SC	-	0.921	200	550	XLPE for HV Cable Insulation (Up to 161kV(Um 170kV))
	CLNA-8141EHV	-	0.921	200	550	XLPE for EHV Cable Insulation (Up to 230kV(Um 245kV))
	CLNA-8141SEHV	-	0.921	200	550	XLPE for EHV Cable Insulation (Above 230kV(Um 245kV))
	CLNA-8151	-	0.921	200	550	XLPE for DC Power Cable Insulation (up to 525kV)
HV/EHV Subsea Cable Insulation	CLNS-8141SC	-	0.921	200	550	XLPE for HV Cable Insulation (Up to 161kV(Um 170kV)), Enhanced Long-run Processability, Shorter Degassing time
	CLNS-8141EHV	-	0.921	200	550	XLPE for EHV Cable Insulation (Up to 230kV(Um 245kV)), Enhanced Long-run Processability, Shorter Degassing time
	CLNS-8141SEHV	-	0.921	200	550	XLPE for EHV Cable Insulation (Above 230kV(Um 245kV)), Enhanced Long-run Processability, Shorter Degassing time
Outdoor Cable Insulation	CLBA-8923BK	-	0.932	200	550	Black XLPE for Outdoor Cable Insulation (Up to 36kV), Excellent Tracking Resistance
	CLBB-8923BK	-	0.923	200	550	Black XLPE for Outdoor Cable Insulation (Up to 36kV)
	CLBA-8924BK	-	0.930	200	550	Black XLPE for Outdoor Cable Insulation (Up to 36kV), Excellent Weatherability
Semiconductive Power Cable Shield	CTBA-8720BK	-	1.14	190	200	Conductor and Bonded Insulation Shield for MV Cable (Up to 69kV(Um 72.5kV))
	CTBA-8730BK	-	1.14	190	200	Conductor and Bonded Insulation Shield for MV Cable (Up to 69kV(Um 72.5kV))
	CCBA-8725BK	-	1.17	140	300	Strippable Insulation Shield for MV Cable (Up to 69kV(Um 72.5kV))
	CCBA-8735BK	-	1.17	140	300	Strippable Insulation Shield for MV Cable (Up to 69kV(Um 72.5kV))
	CTBA-8740BK	-	1.14	150	190	Conductor and Insulation Shield for HV Cable (Up to 161kV(Um 170kV))
	CTBA-8745BK	-	1.14	150	190	Conductor and Insulation Shield for EHV Cable (Up to 230kV(Um 245kV))
	CTBA-8750BK	-	1.14	150	190	Conductor and Insulation Shield for EHV Cable (Above 230kV(Um 245kV))
	CTBA-8760BK	-	1.14	150	190	Conductor and Insulation Shield for DC Cable (Up to 500kV)

(1) The data is typical value, not the specification and may be varied depending on the test condition.

With a network spanning 265 companies across 58 countries, Hanwha Solutions Wire & Cable has established itself as a formidable player in the global cable compound market. The company aspires to become an XLPE Specialty Player, focusing on the Physical and Chemical Cleanliness of extra-high voltage transmission cables. This ambition is aimed at producing high-purity, high-quality cables capable of ensuring a stable power supply under extreme conditions.

Hanwha Solutions has broadened its product portfolio through the acquisition of core technologies, encompassing materials for 90° C HVDC cables, submarine cables, and other strategic product lines. The company's proprietary process technology configures the entire production process as a Closed System, maximizing cable performance and ensuring the stable production of high-purity products. This meticulous attention to detail and quality reflects Hanwha Solutions' dedication to innovation and customer trust.

Hanwha Solutions is committed to reinforcing its market leadership through a diverse product portfolio and cutting-edge technology. As Hanwha Solutions continues its journey towards a sustainable and electrified future, it remains dedicated to pioneering green energy solutions, reinforcing its position as a global leader in wire and cable compounds, and lighting the way for a brighter, more sustainable tomorrow.

Telecommunication Cable Compounds

Property	Melt Index	Density	Tensile Strength at Break	Elongation at Break	Application
	g/10min	g/cm ³	kg/cm ²	%	
Grade					
CHNA-8380	0.7	0.945	240	550	HDPE Insulation for Solid, Skin of Foam/Skin, LAN Cable
CHNA-8380L	0.7	0.945	240	550	HDPE Insulation for High Speed LAN Cable
8600H/L	8.5/2.0	0.962/0.921	260/120	500/600	HDPE/LDPE Insulation for Gas Injection Coaxial Cable

(1) The data is typical value, not the specification and may be varied depending on the test condition.

Jacketing Compounds

Property	Melt Index	Density	Tensile Strength at Break	Elongation at Break	Carbon Black Contents	Application
	g/10min	g/cm ³	kg/cm ²	%	%	
Grade						
CLBB-850BK	0.25	0.933	165	550	2.6	Black LDPE Jacketing Compound
CLNA-8400	0.70	0.920	180	800	-	Natural Colorable LLDPE Jacket, UV stabilizer needs to be blended
CLBA-8450BK	0.80	0.934	200	800	2.5	Black LLDPE Jacketing Compound
CMBA-8240BK	0.23	0.949	300	800	2.5	Black MDPE Jacketing Compound
CHBA-8241BK	0.23	0.955	300	800	2.5	Black HDPE Jacketing Compound

(1) The data is typical value, not the specification and may be varied depending on the test condition.

EVA for Wire & Cable Compounds

Property	VA Content	Melt Index	Density	Melting Temp	Tensile Strength at Break	Elongation at Break	Hardness (Shore A)	Application
	%	g/10min	g/cm ³	°C	kg/cm ²	%	-	
Grade								
1815	15	6.0	0.936	88	160	800	93	Base Resin for Inner Semiconductive Compounds
2815	15	6.5	0.936	88	170	800	93	Base Resin for Inner Semiconductive Compounds
1825	25	2.0	0.947	77	180	850	84	Base Resin for Flame Retardant Compounds
1828	28	4.0	0.950	75	200	800	79	Base Resin for Flame Retardant Compounds
1834	33	17.0	0.953	63	105	800	65	Base Resin for Outer Semiconductive Compounds

(1) The data is typical value, not the specification and may be varied depending on the test condition.

Domestic Operations



Head Office

Hanwha Building,
86 Cheonggyecheon-ro Jung-gu, Seoul

Wire & Cable Sales Team
Fax: 82-2-729-3000
Tel: 82-2-729-5315
Email: jiwhan.park@hanwha.com



Central R&D Center

76 Gajeong-ro, Yuseong-gu,
Daejeon

PO Tech. Center

Fax: 82-42-865-6620
Tel: 82-42-865-6851
Email: bhpark@hanwha.com
Tel: 82-42-865-631
Email: sangkyu.park@hanwha.com

PO Chungcheong Honam Sales Branch

45, Oncheon-ro, Yuseong-gu, Daejeon

Yeosu Plant

117 Yeosu sandan 3-ro, Yeosu
Tel: 82-61-688-1584
Email: jongbin.park@hanwha.com



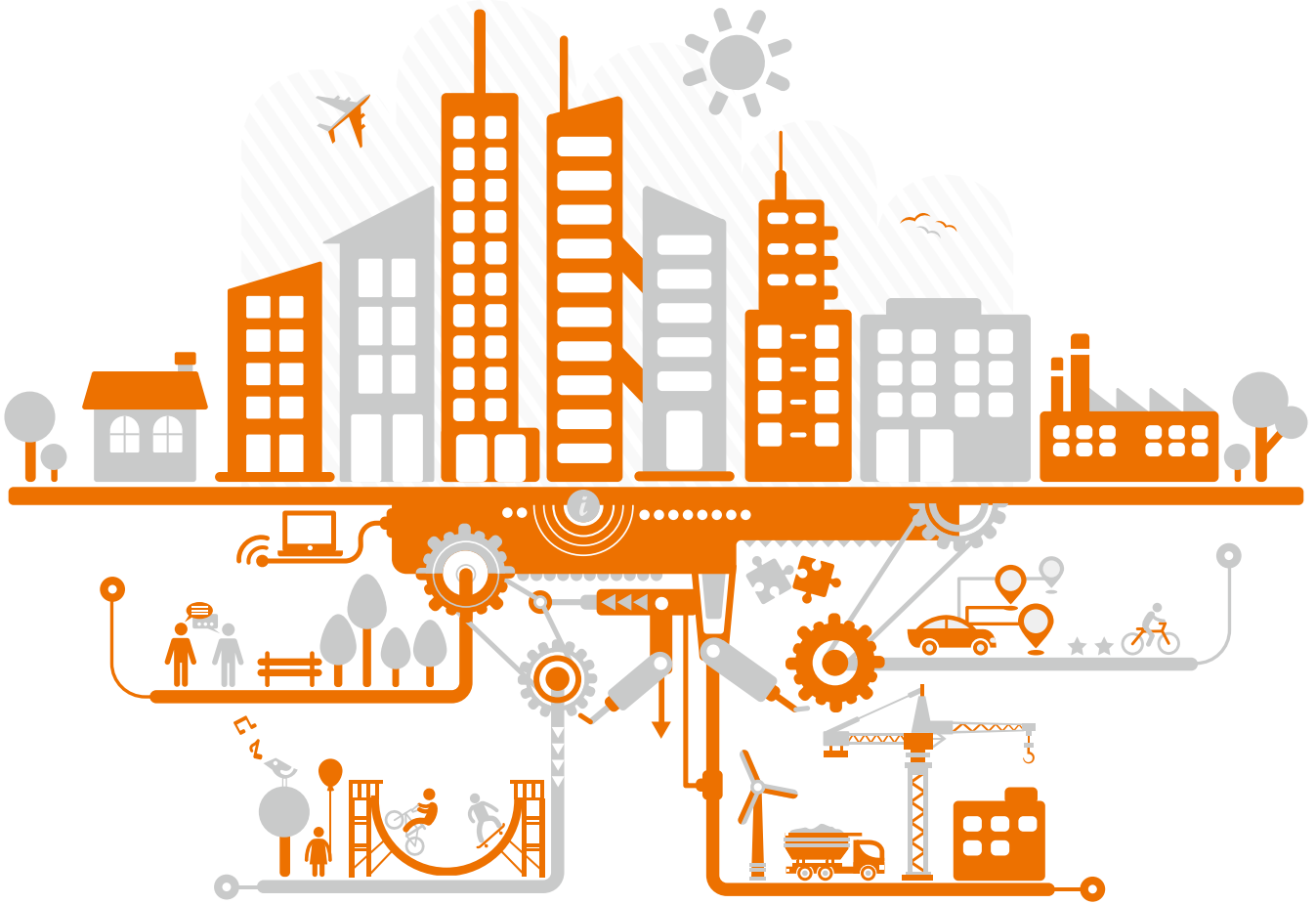
Ulsan Plant

Plant 1: 141 Sanggae-ro, Nam-gu, Ulsan
Tel: 82-52-279-2205
Plant 2: 22 Saneop-ro 440-gil, Nam-gu, Ulsan
Tel: 82-52-279-5114
Plant 3: 22 Yongyeon-ro 230 gil, Nam-gu, Ulsan
Tel: 82-52-279-1012



PO Yeongnam Sales Branch

30, Centum seo-ro, Haeundae-gu, Busan



Leading EHV, Submarine and HVDC Compound Supplier Hanwha Solutions builds a better tomorrow with clean technology



[Hanwha Solutions | hcc.hanwha.co.kr/en/](http://hcc.hanwha.co.kr/en/)

Hanwha Solutions stands as a beacon of innovation and sustainability in the global market, driven by a commitment to excellence and a vision for a better future. Established as a subsidiary of the renowned Hanwha Group, Hanwha Solutions has emerged as a leader in various sectors, ranging from renewable energy to advanced materials, contributing significantly to the development of industries worldwide.

Hanwha Solutions traces its roots back to the establishment of Hanwha Chemical Corporation in 1965, marking a significant milestone in Korea's chemical industry advancement. From pioneering Korea's first production of PVC (Polyvinyl Chloride) in 1965 to achieving successive milestones such as Korea's inaugural production of LDPE (Low Density Polyethylene) in 1972, Wire & Cable compounds (XLPE) in 1981, and LLDPE (Linear Low-Density Polyethylene) in 1986, the company has remained at the forefront of innovation. Furthermore, Hanwha Chemical expanded its portfolio over the decades to include a comprehensive range of basic petrochemical products, including HDPE (High Density Polyethylene), EVA (Ethylene Vinyl Acetate Copolymer), CA (Chlor-Alkali), ASR (Alkali Water Soluble Resin), and TDI (Toluene Diisocyanate). In 2018, Hanwha Chemical Corporation merged with Qcells (Solar Energy), Insight (Real Estate Development) and Q Energy (Green Energy), rebranded itself as Hanwha Solutions, reflecting its evolving focus on delivering sustainable solutions for the planet through smart energy solutions and customer-focused materials.

Continuing its trajectory of growth and diversification, Hanwha Solutions Chemical Division expanded its operations to encompass the production of CPVC (Chlorinated Polyvinyl Chloride), hydrogenated resins, XDI (Xylylene diisocyanate), and advanced Wire & Cable compounds (Extra-high voltage XLPE & Semicon for DC (Direct Current), AC (Alternating Current) and Submarine Cable). Through strategic expansions and investments in research and development, Hanwha Solutions Chemical Division has consistently adapted to meet the evolving needs of industries worldwide, solidifying its position as a leader in the global chemical market.

Hanwha Solutions

Global Networks



HEAD OFFICE

Hanwha Solutions Corporation

HANWHA BUILDING, 86 CHEONGGYEcheon-ro JUNG-gu, SEOUL, REPUBLIC OF KOREA
TEL. 82 2 729 5315 FAX. 82 2 729 3000 Email. jiwghan.park@hanwha.com

● Global Networks ● Overseas Sites ○ Overseas Branch Offices

R&D CENTER

Hanwha Solutions Corporation

76 GAJEONG-ro, YUSEONG-gu, DAEJEON, REPUBLIC OF KOREA
TEL. 82 42 865 6851 FAX. 82 42 865 6620

YEOSU PLANT

Hanwha Solutions Corporation

117 YEOSU SANDAN3-ro, YEOSU, REPUBLIC OF KOREA
TEL. 82 61 688 1584 FAX. 82 61 688 6679

ULSAN PLANT

Hanwha Solutions Corporation

141 SANGGAE-ro, NAM-gu, ULSAN, REPUBLIC OF KOREA
TEL. 82 52 279 2205 FAX. 82 52 267 6606

CHINA

SHANGHAI

Hanwha Solutions CORP. SHANGHAI OFFICE

RM.1903B, DAWNING CENTRE EAST, NO 500
HONGBAOSHI ROAD, CHANGNING DISTRICT,
SHANGHAI 201103, CHINA
TEL. 86 21 6270 2447 FAX. 86 20 3893 1546

GUANGZHOU

Hanwha Solutions CORP. GUANGZHOU OFFICE

RM 1905, WEST TOWER, FORTUNE PLAZA,
#116-118, TIYUDONG ROAD, GUANGZHOU,
CHINA
TEL. 86 20 3893 1553
FAX. 86 20 3893 1546

BEIJING

Hanwha Solutions CORP. BEIJING OFFICE

10F, SOUTH TOWER, BEIJING KERRY CENTER, 1
GUANG HUA ROAD, CHAO YANG DISTRICT,
BEIJING 100020 CHINA
TEL. 86 10 6566 0116-9
FAX. 86 10 6566 0108

JAPAN

Hanwha JAPAN Co., Ltd

HANWHA BLDG 8F, 10-1, SHIBA-4CHOME,
MINATO-KU TOKYO 108, JAPAN
TEL. 81 3 5441 5901 FAX. 81 3 5441 5921

INDIA

Hanwha Chemical India Pvt. Ltd.

UNIT NO. 105-106, RECTENALE 1, D-4
DISTRICT CENTRE, SAKET, NEW DELHI 110017,
INDIA
TEL. 91 11 4308 5500
FAX. 91 11 4308 5555

THAILAND

Hanwha Chemical (Thailand) Co., Ltd

377 MOO 17, BANGNA-TRAD ROAD,
BANGSAOTHONG, SAMUTPRAKARN 10570,
THAILAND
TEL. 66 2 315 3204 FAX. 66 2661 9263

SINGAPORE

Hanwha INTERNATIONAL (S) PTE. LTD

SGX CENTRE TWO, #15-05/06 4 SHENTON
WAY, SINGAPORE 068807
TEL. 65 6227 3139 FAX. 65 6227 9337

UAE

Hanwha CORPORATION DUBAL REPRESENTATIVE OFFICE

P.O.BOX NO. 502806 BUSINESS CENTRAL
TOWER B, #2403B DUBAL MEDIA CITY, DUBAL,
UAE
TEL. 971 4 375 4992 FAX. 971 4 434 2193

SAUDI ARABIA

International Polymers Company

P.O.BOX 12021, JUBAIL INDUSTRIAL CITY
31961, KINGDOM OF SAUDI ARABIA

USA

Hanwha INTERNATIONAL LLC

300 FRANK W. BURR BLVD. SUITE 52,
TEANECK, NJ 07666 USA
TEL. 1 201 347 3000
FAX. 1 201 347 3001

GERMANY

Hanwha EUROPE GMBH

KOLNER STRASSE 10, 65760 ESCHBORN
(BEI FRANKFURT/M) GERMANY
TEL. 49 6196 5016 0 FAX. 49 6196 5016 90

MALAYSIA

Hanwha Chemical Malaysia Sdn. Bhd

22.04 LEVEL 22 MENARA CITIBANK, 165
JALAN AMPANG, 50450 KUALA LUMPUR
MALAYSIA
TEL. 603 2161 8001